



Thinstuff

XP/VS Terminal Server

Thinstuff XP/VS Terminal Server - NEW! Windows 7 and Windows Server 2008 R2 support!

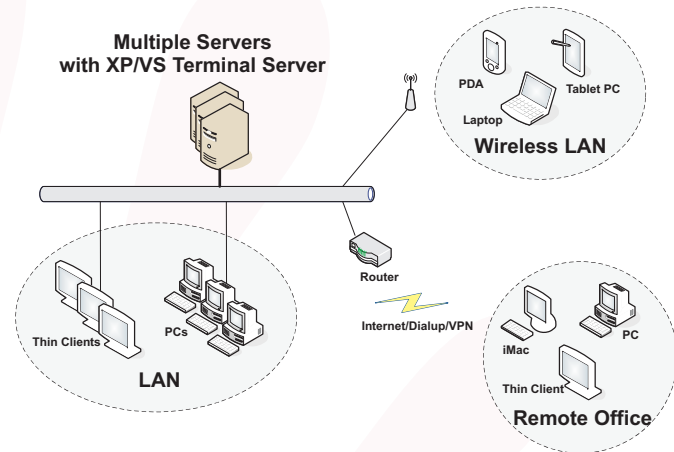
Thinstuff's XP/VS Terminal Server transforms your Windows Workstation or Server into a full-blown Terminal Server.

Turn your Windows workstation into a Terminal Server!

Adding Thinstuff's XP/VS Terminal Server to a Windows workstation enables you to establish an unlimited number of RDP connections to it. This turns your Windows workstation into a complete Terminal Server and enables cost effective Server Based Computing.

Cost savings in your IT infrastructure

Deployment of Thinstuff's XP/VS Terminal Server enables cost savings in licensing, hardware, service and support.



**Your Windows becomes a full-blown Terminal Server ...
... with XP/VS Terminal Server**

Thinstuff XP/VS Terminal Server provides even more!

Additional features which make XP/VS Terminal Server a really complete Terminal Server:

- **TSX USB** - Usage of any USB device over the network (USB 1.1. and 2.0)
- **TSX RemoteApp (Seamless Windows)**: Remote Programs offer seamless integration of specific applications into the client's desktop just as if they were local, instead of publishing the complete user desktop
- **TSX Session Broker (Load Balancing)**: In multiple Terminal Server environments, incoming RDP sessions are automatically distributed among the Terminal Servers of a load balancing cluster
- **Enhanced Application Compatibility**: Compatibility Mode for older applications which are not Terminal Server enabled (e.g. change user /install, ini file mapping, registry mapping, etc.)
- **Active Directory Domain membership of XP/VS Terminal Server computers**
- **Remote Control (Shadowing)**: Mirroring of RDP sessions for support purposes

The following features are currently under development:

- **TSX Application Control**: Access to specific applications can be restricted to designated groups or users
- **TSX Gateway (RDP VPN Solution)**: Encrypted transmission of the RDP protocol through SSL secured HTTPS connections on port 443 over the internet
- **TSX Web Access (Web Portal)**: Access to published applications through a web portal

Trial Version

Free fully featured 14-day version

www.thinstuff.com/products/xpvs-server/

Phone: +43-720-501 281 E-Mail: sales@thinstuff.com



The next Dimension of VDI and SBC
www.thinstuff.com

Thinstuff s.r.o.
Austria
Bahnhofplatz 7/3
A-2340 Mödling
Email: sales@thinstuff.com
Fax: +43-2236-328 311



Thinstuff

XP/VS Terminal Server

System requirements:

Hardware:

Minimum requirements for one „Host“ user and one RDP user:

CPU: Min. Pentium IV 1Ghz or better
RAM: Min. 512MB

Recommended values for each additional RDP user:

CPU: additional 100Mhz
RAM: additional 96MB

Software:

All operating systems which are listed in the below feature comparison table

Feature comparison:

XP/VS Terminal Server Versions:	Lite	Standard	Professional
x86 (32-Bit) Operating System Support			
Windows XP Home (RTM, SP1, SP2, SP3)	✓	✓	✓
Windows XP Professional (RTM, SP1, SP2, SP3)	✓	✓	✓
Windows XP Media Center 2005 incl. Rollup 2 (SP2, SP3)	✓	✓	✓
Windows Small Business Server 2003 (SP1, SP2)	✗	✓	✓
Windows Server 2003 x86 Web / Standard / Enterprise / Datacenter (SP1, SP2)	✗	✓	✓
Windows Vista Home Basic/Home Premium/Business/Ultimate/Enterprise x86 (RTM, SP1, SP2)	✓	✓	✓
Windows 7 Starter/Home Basic/Home Premium/Professional/Ultimate/Enterprise x86 (RTM)	✓	✓	✓
Windows Server 2008 Web/Standard/Enterprise/Datacenter x86 (SP1, SP2)	✗	✓	✓
x64 (64-Bit) Operating System Support			
Windows XP Professional x64	✓	✓	✓
Windows Server 2003 x64 Web/Standard/Enterprise/Datacenter (SP1, SP2)	✗	✓	✓
Windows Vista Home Basic/Home Premium/Business/Ultimate/Enterprise x64 (RTM, SP1, SP2)	✓	✓	✓
Windows 7 Home Basic/Home Premium/Professional/Ultimate/Enterprise x64 (RTM)	✓	✓	✓
Windows Server 2008 Web/Standard/Enterprise/Datacenter x64 (SP1, SP2)	✗	✓	✓
Windows Server 2008 R2 Foundation/Web/Standard/Enterprise/Datacenter x64 (RTM)	✗	✓	✓
Windows Small Business Server 2008 x64 (SP1, SP2)	✗	✓	✓
Features			
Remote Control	✓	✓	✓
Mirroring of RDP sessions for support purposes	✓	✓	✓
Active Directory Domain membership of XP/VS Terminal Server computers			
Windows Active Directory Domain membership of XP/VS Terminal Server computers to allow domain authentication of Remote Desktop users (XP/VS Terminal Server Lite only supports computers which are members of Windows Workgroup environments)	✗	✓	✓
Enhanced Application Compatibility			
Compatibility mode for older applications which are not Terminal Server capable - e.g. change user /install, ini file mapping, registry mapping, etc.	✗	✓	✓
TSX USB	✗	✗	✓
(USB redirection)	✗	✗	✓
TSX RemoteApp (seamless windows)	✗	✓	✓
TSX Gateway (RDP over HTTPS)	✗	✓ (August 2010)	✓ (August 2010)
Compatible with Microsoft RDP6 Client	✗	✓ (August 2010)	✓ (August 2010)
TSX Application Control (rights management for Remote Programs)	✗	✓ (Q4/2010)	✓ (Q4/2010)
TSX Web Access (web portal)	✗	✓ (Q4/2010)	✓ (Q4/2010)
TSX Session Broker (load balancing)	✗	✓	✓
Compatible with Microsoft RDP6 Client	✗	✓	✓
	✓	supported	
	✓	under development	
	✗	not available	

